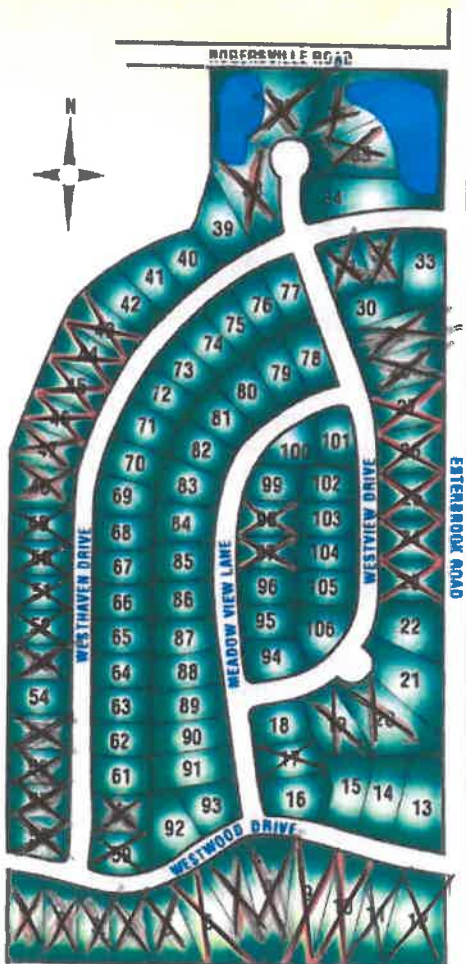


Meadow Estates

subdivision

- Fully Improved Lots with Sewer Included
- Home & Lot Package Discounts



- Offering A Variety Of Lots - Wooded, Pond, Potential Walkout, Single Family & Duplex
- Prices From \$35,900 to \$48,900
- Protective Covenants
- X = SOLD

Offered By

**Roberts
Homes**

And Real Estate
1315 S MAIN ST, FOND DU LAC, WI

923-4522